

Sustainable Families, Farms and Food Resilient Communities through Organic Practices

Beyond Pesticides' 31st National Pesticide Forum

University of New Mexico
Albuquerque, NM ■ April 5-6, 2013



Cutting Edge Science

Researchers in endocrine disruption, birth defects, cancer, learning disabilities and more. Featuring Joel Forman, MD, on his American Academy of Pediatrics organic food report and Tyrone Hayes, UC Berkeley on frog deformities.

Protecting Cultural Food Security and Biodiversity

Traditional farmer Don Bustos; Courtney White, founder and creative director of The Quivira Coalition; and Clayton Brascoupe from Traditional Native American Farmers Association.

Fighting GE Crops

National and local experts, including Andy Kimbrell, Center for Food Safety; NM Food and Water Watch's Eleanor Bravo; and Isaura Andaluz of Cuatro Puertas.

Protecting Pollinators

Protecting against declining honey bee health and colony collapse, including Les Crowder, President of the NM Beekeepers Association.

Organic Solutions

Building resilience in our food system. Featuring Rodale Institute's organic farm manager Jeff Moyer.

Convened by:



Co-Sponsored by: Agri-Cultura Network, Amigos Bravos, Cuatro Puertas, Farm to Table, Food and Water Watch NM, Holistic Management International, Mid-Region Council of Governments Agriculture Collaborative (MRCOG), New Mexico Department of Agriculture's Organic Program, Our Endangered Aquifer Working Group, Santa Fe Farmers Market Institute, Sierra Club Rio Grande Chapter, Skarsgard Farms, South Valley Economic Development Center (SVEDC)

www.beyondpesticides.org/forum

Sustainable Families, Farms and Food

Resilient Communities through Organic Practices

Beyond Pesticides' 31st National Pesticide Forum

University of New Mexico

Albuquerque, NM ■ April 5-6, 2013

Registration prices include admission to all sessions as well as organic food and beverages.

We encourage you to register online today to ensure your spot!

For more information, see our website, call 202-543-5450 or email forum@beyondpesticides.org

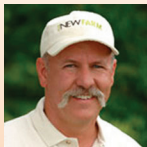
Register Today!

- ✓ Students: \$15
- ✓ Grassroots activists/ members: \$35
- ✓ Regular (includes 1-year membership): \$75
- ✓ Business Rate: \$175

Convened by:



Jeff Moyer
Rodale Institute



Kaiulani Lee
A Sense of Wonder



Don Bustos
American Friends Service Committee-NM



Joel Forman, MD
Mt. Sinai Hospital



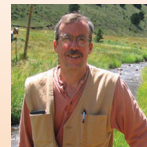
Tyrone Hayes, Ph.D.
UC Berkeley



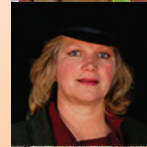
Andrew Kimbrell
Center for Food Safety



Courtney White
Quivira Coalition



Lani Malmberg
Ewe4ic Ecological Services



Lynn Carroll, Ph.D.
TEDX, The Endocrine Disruption Exchange



Les Crowder
Top Bar Beekeeping



Kara Bobroff
Native American Community Academy



Bruce Milne, Ph.D.
UNM Sustainability Studies Program



www.beyondpesticides.org/forum



Printed on 100% Recycled Paper, with Vegetable Based Inks